



# Southwick Mews, W2

**LUROT BRAND**

MEWS SPECIALISTS EST. 1971

020 7590 9955  
sales@lurotbrand.co.uk



First Floor

Ground Floor



# Southwick Mews, W2

Freehold

£1,850,000 STC

---

A characterful freehold house on this delightful mews which offers flexible accommodation.

With a significantly high-standard of finish, including the use of fine marble, high-quality floorings and Bang and Olufsen TV and sound, this traditional mews frontage now hides a thoroughly contemporary, yet sympathetically designed interior.

#### LOCATION

Southwick Mews runs between Norfolk Place and Southwick Street. Its quiet location is within walking distance to Paddington and Hyde Park.



Ground Floor

First Floor





First Floor

Second Floor



## FEATURES

Four Bedrooms

---

Sitting Room

---

Reception Room

---

Bathroom

---

Kitchen/Reception Room

---

Shower Room

---

Cloakroom

---

En Suite Bathroom

---

## OTHER USEFUL INFORMATION

EPC

---

C

Council Tax Band

---

G

## NEAREST TUBE STATIONS

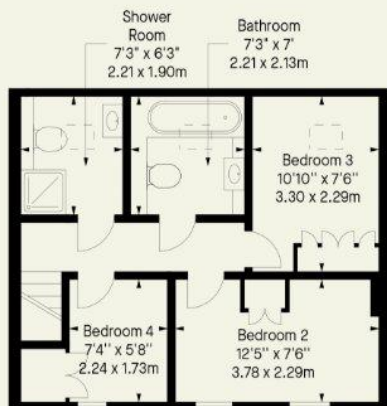
Paddington (Circle, District, Bakerloo, Hammersmith & City, Future  
Crossrail and Main Lines Services)

---

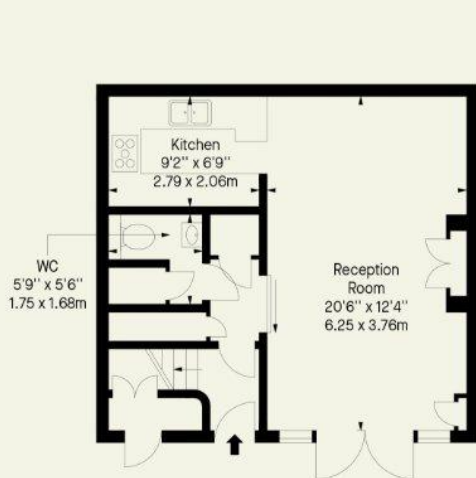
---

# Southwick Mews London, W2

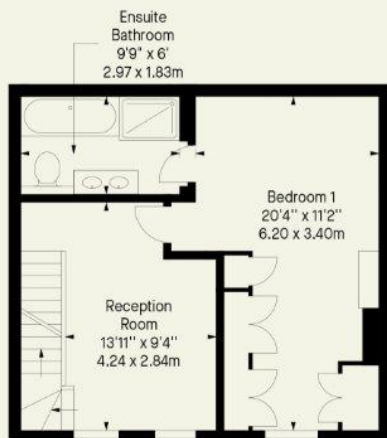
Approx. Gross Internal Area \*  
1299 Ft<sup>2</sup> - 120.68 M<sup>2</sup>



Second Floor



Ground Floor



First Floor

Whilst every attempt has been made to ensure the accuracy of the floor plan contained here, measurements of doors, windows, rooms and any other item are approximate and no responsibility is taken for any error, omission, or misstatement. Please check all dimensions before making a decision reliant upon them.

This plan is for guidance only and must not be relied upon as a statement of fact. Attention is drawn to the important notice on the last page of the text of the particulars.

Hyde Park  
37-41 Sussex Place, Hyde Park,  
London W2 2TH

South Kensington  
4-5 Kynance Place, South Kensington,  
London SW7 4QS

[WWW.LUROTBRAND.CO.UK](http://WWW.LUROTBRAND.CO.UK)



Members of NAEA, ARLA, onthemarket.com. Lurot Brand (2) Limited T/A Lurot Brand. Registered in England No. 02035540. Registered Office: 37-41 Sussex Place, London, W2 2TH. VAT No. 629 099 505. [www.lurotbrand.co.uk](http://www.lurotbrand.co.uk)

We have produced these sales particulars as a general guide. We have not carried out a detailed survey of the property and have not tested the services, appliances, or specific fittings. Room sizes are for general guidance purposes and should not be relied upon for fitting carpets or furnishings. Pictures may have been digitally enhanced. Floor plans are not to scale. Fittings shown on floor plans may not match the actual layout or size of fittings at the property. None of the statements as to the property contained in these particulars are to be relied upon as statements or representations of fact. Any reference to alterations to, or use of, any part of the property does not mean that any necessary planning, building regulations or other consent has been obtained. A buyer or lessee must find out by inspection or in other ways that these matters have been properly dealt with and that all information is correct.

All statements in these particulars as to this property are made without responsibility on the part of Lurot Brand. The Seller does not make or give and neither Lurot Brand or any person in their employment has any authority to make or give any representation or warranty whatever in relation to this property.