



# Codrington Mews, W11

**LUROT BRAND**

MEWS SPECIALISTS EST. 1971

020 7590 9955  
[lettings@lurotbrand.co.uk](mailto:lettings@lurotbrand.co.uk)



Ground Floor

Second Floor



# Codrington Mews, W11

Unfurnished

£1,500 PW

---

Beautifully refurbished three bedroom mews house works perfectly as a stylish family home.

With hard wood floors, eat in kitchen, garage and even a roof terrace! Perfect for entertaining and family life.

Ideally located for practical access to the square mile and weekend fun. The world famous Portobello market and the fashion haven of Westbourne Grove no more than a few minutes stroll away.

## LOCATION

A few seconds stroll to the restaurants, bars and boutiques of Kensington Park Road and Westbourne Grove, this property is an excellent Prime Central London home.





First Floor

Second Floor





First Floor

Second Floor



## FEATURES

Three bedrooms

---

Garage / Study

---

Two bathrooms

---

Terrace

---

## OTHER USEFUL INFORMATION

EPC

---

E

Council Tax Band

---

E

Deposit Amount

---

£9,300.00

---

## NEAREST TUBE STATIONS

Notting Hill Gate (Central, Circle & District Lines) Ladbroke

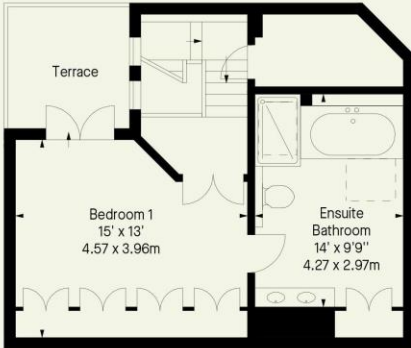
---

Grove (Circle, Hammersmith & City Lines)

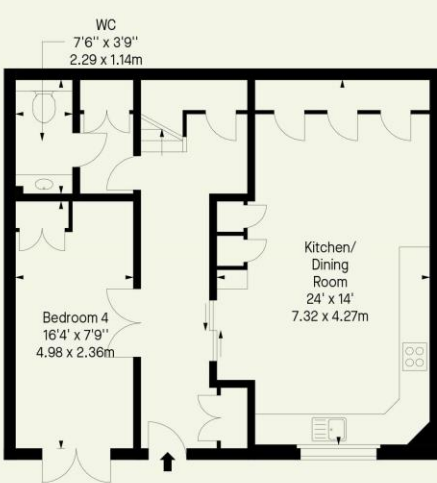
---

# Codrington Mews, W11

Approx. Gross Internal Area \*  
1787 Ft<sup>2</sup> - 166.01 M<sup>2</sup>  
Approx. Gross Internal Area \*  
1851 Ft<sup>2</sup> - 171.96 M<sup>2</sup>  
(Including Terrace)



Second Floor



Ground Floor



First Floor

Notting Hill  
8 Ladbroke Grove, Notting Hill,  
London W11 3BG

Hyde Park  
37-41 Sussex Place, Hyde Park,  
London W2 2TH

South Kensington  
4-5 Kynance Place, South Kensington,  
London SW7 4QS

**WWW.LUROTBRAND.CO.UK**



Members of NAEA, ARLA, onthemarket.com. Lurot Brand (2) Limited T/A Lurot Brand. Registered in England No. 02035540. Registered Office: 37-41 Sussex Place, London, W2 2TH. VAT No. 629 099 505. [www.lurotbrand.co.uk](http://www.lurotbrand.co.uk)

---

N.B. This company name will change back to Lurot Brand Limited within the next 6 months. We have produced these sales particulars as a general guide. We have not carried out a detailed survey of the property and have not tested the services, appliances, or specific fittings. Room sizes are for general guidance purposes and should not be relied upon for fitting carpets or furnishings. Pictures may have been digitally enhanced. Floor plans are not to scale. Fittings shown on floor plans may not match the actual layout or size of fittings at the property. None of the statements as to the property contained in these particulars are to be relied upon as statements or representations of fact. All statements in these particulars as to this property are made without responsibility on the part of Lurot Brand. The Seller does not make or give and neither Lurot Brand or any person in their employment has any authority to make or give any representation or warranty whatever in relation to this property.