



# Craven Hill Mews, W2

**LUROT BRAND**

MEWS SPECIALISTS EST. 1971

020 7590 9955  
[lettings@lurotbrand.co.uk](mailto:lettings@lurotbrand.co.uk)



Street

Lower Ground Floor



# Craven Hill Mews, W2

Unfurnished

£1,400 PW

---

## A charming south-facing, four-bedroom mews house

Large windows provide plenty of light to the principal rooms across four floors. This is an ideal family home offering an open-plan kitchen/dining room and patio on the lower ground floor, a reception room and bedroom on the ground floor, and a further three bedrooms on the top two floors.

### LOCATION

Craven Hill Mews is tucked into a lovely neighbourhood that has seen a huge improvement in recent years. Benefitting from being a very short stroll from Hyde Park, Little Venice and Paddington with its new retail area and Crossrail station, this property benefits from a fantastic array of central London highlights, yet is very tranquil, light and pretty.



Second Floor

Lower Ground Floor







Ground Floor

Lower Ground Floor



## FEATURES

Four Bedrooms with Built-in

Kitchen/Dining Room

Storage

WC

Family Bathroom

Patio

Reception Room

## OTHER USEFUL INFORMATION

EPC

C

Council Tax Band

G

Deposit Amount

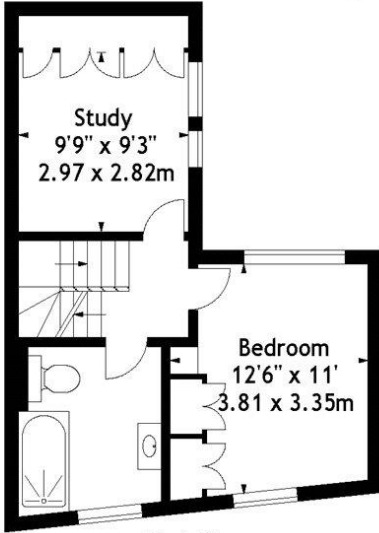
£8,400.00

## NEAREST TUBE STATIONS

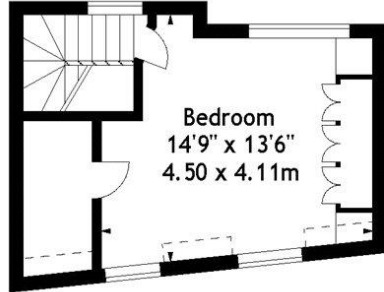
Paddington and Lancaster Gate (Central, District, Circle,

Bakerloo, Mainline Services)

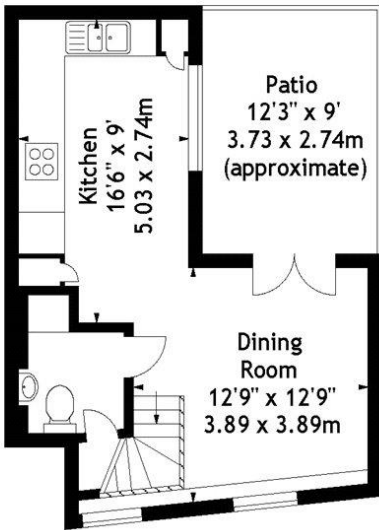
Craven Hill Mews, W2  
Approx. Gross Internal Area  
1326 Sq Ft - 123.19 Sq M



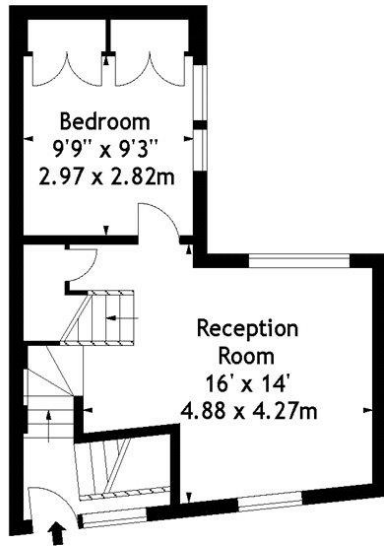
First Floor



Second Floor



Lower Ground Floor



Raised Ground Floor

Measured in accordance with RICS guidelines. Every attempt is made to ensure accuracy, however all measurements are approximate. This floor plan is for illustrative purposes only and is not to scale.

© Datography Ltd 2016  
Photographs \* Floorplans \* Virtual Tours  
Tel: 0845 643 4401 [www.datography.com](http://www.datography.com)

Hyde Park  
37-41 Sussex Place, Hyde Park,  
London W2 2TH

South Kensington  
4-5 Kynance Place, South Kensington,  
London SW7 4QS

**WWW.LUROTBRAND.CO.UK**



Members of NAEA, ARLA, onthemarket.com. Lurot Brand (2) Limited T/A Lurot Brand. Registered in England No. 02035540. Registered Office: 37-41 Sussex Place, London, W2 2TH. VAT No. 629 099 505. [www.lurotbrand.co.uk](http://www.lurotbrand.co.uk)

---

We have produced these sales particulars as a general guide. We have not carried out a detailed survey of the property and have not tested the services, appliances, or specific fittings. Room sizes are for general guidance purposes and should not be relied upon for fitting carpets or furnishings. Pictures may have been digitally enhanced. Floor plans are not to scale. Fittings shown on floor plans may not match the actual layout or size of fittings at the property. None of the statements as to the property contained in these particulars are to be relied upon as statements or representations of fact. All statements in these particulars as to this property are made without responsibility on the part of Lurot Brand. The Seller does not make or give and neither Lurot Brand or any person in their employment has any authority to make or give any representation or warranty whatever in relation to this property.