



St. Lukes Mews, W11

LUROT BRAND

MEWS SPECIALISTS EST. 1971

020 7590 9955
sales@lurotbrand.co.uk



Third Floor

Second Floor



St. Lukes Mews, W11

Freehold

£3,200,000 STC

This is a wonderful three-bedroom house with a large roof terrace which soaks up the sun all day long.

This mews is in good condition for those looking to move straight in to, but equally has bags of potential for those looking to make a mews their own.

LOCATION

This is in one of the prettiest streets in the area. A road away from the famous Portobello Market and a short walk to two Tube stations Ladbrooke Grove, Westbourne Park (20 mins to King's Cross, 12 mins to Baker Street). The property is surrounded by coffee bistro's, delicatessens, and a choice of dining experiences.



Second Floor

Second Floor





Second Floor

First Floor



FEATURES

Three bedrooms	Kitchen
Entrance hall	Reception Room
Roof terrace	Utility Room
Garage	

OTHER USEFUL INFORMATION

EPC	E
Council Tax Band	F

NEAREST TUBE STATIONS

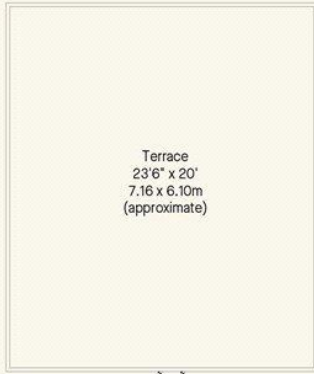
Ladbroke Grove (Circle, Hammersmith & City lines)
Westbourne Park (Circle, Hammersmith & City lines)

St. Lukes Mews

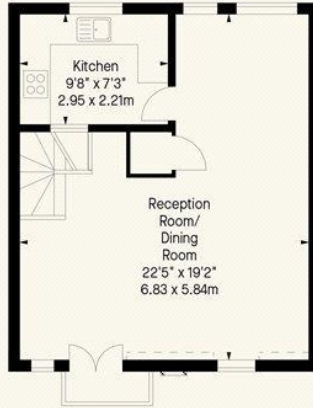
Approx. Gross Internal Area *
1350 Ft² - 125.42 M²
(Including Garage)

Garage

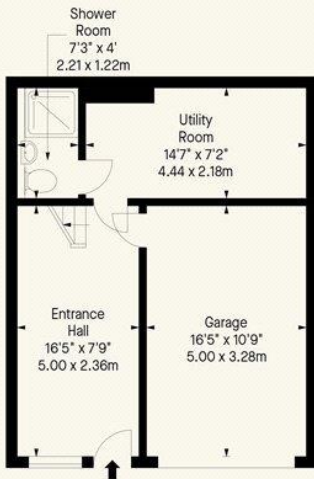
Approx. Gross Internal Area *
177 Ft² - 16.44 M²



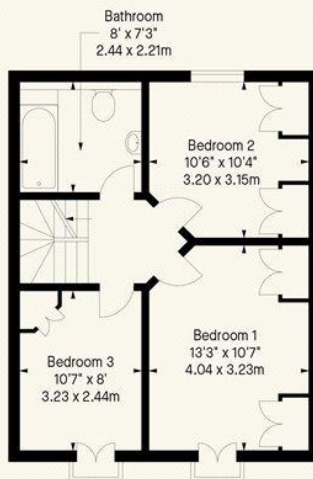
Third Floor



Second Floor



Ground Floor



First Floor

Whilst every attempt has been made to ensure the accuracy of the floor plan contained here, measurements of doors, windows, rooms and any other item are approximate and no responsibility is taken for any error, omission, or misstatement. Please check all dimensions before making a decision reliant upon them.

Notting Hill
8 Ladbrooke Grove, Notting Hill,
London W11 3BG

Hyde Park
37-41 Sussex Place, Hyde Park,
London W2 2TH

South Kensington
4-5 Kynance Place, South Kensington,
London SW7 4QS

WWW.LUROTBRAND.CO.UK



Members of NAEA, ARLA, onthemarket.com. Lurot Brand (2) Limited T/A Lurot Brand. Registered in England No. 02035540. Registered Office: 37-41 Sussex Place, London, W2 2TH. VAT No. 629 099 505. www.lurotbrand.co.uk

We have produced these sales particulars as a general guide. We have not carried out a detailed survey of the property and have not tested the services, appliances, or specific fittings. Room sizes are for general guidance purposes and should not be relied upon for fitting carpets or furnishings. Pictures may have been digitally enhanced. Floor plans are not to scale. Fittings shown on floor plans may not match the actual layout or size of fittings at the property. None of the statements as to the property contained in these particulars are to be relied upon as statements or representations of fact. All statements in these particulars as to this property are made without responsibility on the part of Lurot Brand. The Seller does not make or give and neither Lurot Brand or any person in their employment has any authority to make or give any representation or warranty whatever in relation to this property.