

# LUROT BRAND

[www.lurotbrand.co.uk](http://www.lurotbrand.co.uk)



## MEWS NEWS

WINTER 2008

# LEXHAM MEWS STREET PARTY



On the 5th July 2008 Lurot Brand sponsored the Lexham Mews Street Party which was held to inaugurate the newly rebuilt archway which had been knocked down by a builders' lorry.

With the threat of heavy rain, we took along 30 large Lurot Brand umbrellas which thankfully were never used. The entire event was dry and for a large part, sunny.

At 3pm, Brian Waters, a resident in the mews, an architect and the force behind the rebuilding of the archway, introduced Victoria Borwick who very kindly cut the red ribbon. This was followed by Lavinia Wallop (also a resident in the mews) speaking about the charity (Amici Dance Group) which we were supporting.

Then, it was a free for all! The cucumber sandwiches, scones and clotted cream, stawberries and cream and the most wonderful, huge Tarte aux Pommes were an enormous success and the Pimm's was a total wipeout. One of our negotiators, spent the entire afternoon topping up a lot of very thirsty people. We were amazed at how little wine and soft drinks were consumed. Pimm's is obviously the great

were imaginative, efficient and very very funny. A huge thank you to them.

Also, a huge thank you to the Lurotbrandites who played host to well over a hundred people. Maurice Patry was in charge of the raffle tickets (the event made over £1,000 for the charity) his wife Lynn helped in preparing and pouring endless drinks. Alicia, Will and Izabela made sure everyone had plenty to eat and the Junior Lurots - Oliver and Peggy watched while their children had their faces painted (see photographs).

Any mews wanting to hold a street party next summer - please contact us to discuss.

Kati Lurot



favourite. In fact, the food and drinks turned out to be a perfect formula.

The raffle was great fun - and was drawn by myself and my son, Oliver. The prizes were seriously generous such as the loan of an Audi A3 Cabriolet for a weekend from Miles and Miles Luxury Car Hire, a photoshoot donated by Alma Studios, an EmaS Divers watch given by Bramley of Kensington, beautiful silk cushions, Estee Lauder products, luxury scented candles, wines, etc.

I must say that if and when we sponsor another mews street party, I hope that the committee are as wonderful as in Lexham Mews. Barry and Jane Munday, Lavinia and Nico Wallop and Brian and Myriam Waters



# THE PAVILIONS OF THE SERPENTINE GALLERY



It all started in the summer of 2000. Driving through Hyde Park to the office in Sussex Place every day, I would pass the Serpentine Gallery and look over to see what progress had been made with the construction in front of the Gallery. What was it going to be? Surely it wasn't going to be permanent. What eventually grew from the ground was Zaha Hadid's Summer Pavilion described by the Guardian as 'Briefly Brilliant'. All too soon the Summer was over and the Pavilion gone – I had missed my chance to see inside it.

The following year, a different structure was erupting from behind the screens in front of the Gallery and this time I had some sort of idea what was going to happen but what grew from the ground was an unusual beast. It caused comment in the office and two of us decided to explore. Kati Lurot and I set off to have a look at what was called "Eighteen Turns" designed by Daniel Libeskind. Interesting, unusual and certainly stimulating. 'Temporary structures like Eighteen Turns are great additions to our parks and cityscapes; they can offer us adventurous, alternative and even radical impressions of what a new architecture might be.' wrote The Guardian. Well, that may be the Guardian's thoughts, but only a few weeks later, the Pavilion once more disappeared, presumably to be re-erected in the grounds of a country house somewhere in the home counties. Kati and I however had managed to have a coffee and croissant inside it.

The summer of 2002 seems to have been erased from my memory so fantastic was the structure that landed in front of the Gallery. I know that once again Kati and I went along to have coffee and croissants. We looked around the structure but for the life of me (writing this six years after the event) I have only the vaguest memory of what seemed to be a plastic box (apologies to the artist/architect) but maybe 2002 is

best forgotten.

In 2003, watching Oscar Neimeyer's pavilion growing from the ground was fascinating. This was a structure that surely would last a little longer than the previous residents of the Serpentine Gallery's front lawn. The graceful concrete, glass and

aluminium structure once again became topical in conversation, and once more Mrs Lurot and I went on what had now become our annual pilgrimage to the Summer Pavilion for coffee and croissants. 'Imagine Garbo or Sinatra in their prime, and performing now. With this week's opening of the 2003 Serpentine Gallery Pavilion, just such a time-warping miracle is taking place.' wrote Evening Standard. I agree!

The pilgrimage of 2005 was less memorable than that of the previous pavilion. The structure by Alvaro Siza and Eduardo Souto de Moura whilst being interesting in its construction was to me, little more than a wooden frame tent with an ill fitting plastic covering to keep the rain off. Nevertheless coffee and croissants were consumed by the two intrepid estate agents and a very pleasant, if not exactly inspiring morning was had.

2006 was going to be interesting. What seemed to be an enormous bit of opaque plastic tube topped off with a balloon tethered to the ground that would rise and fall according to the weather turned out to be just that. Designed by Rem Koolhaas, the structure glowed at night like a rather ghostly hot air balloon. This year, unlike past pavilions, it could be seen from a distance, particularly in the evening and seemed to me to invite more people to explore. Once more the pavilion had made me smile.

Two pavilions in 2007! Once again Zaha Hadid produced a striking pavilion for the Gallery's summer party and then we had the efforts of

Olafur Eliasson and Kjetil Thorsen who produced a rather interactive space on the front lawn with a spiral wooden ramp leading to the summit of the pavilion enabling Mrs. Lurot and I to gaze down on the other visitors in the auditorium area below. Once again, following the consumption of coffee and croissant, we were left with the burning question of whether we liked this year's offerings. The answer? A resounding yes.

Half way through the erection of the 2008 Pavilion, it did cross my mind that the designer, Frank Gehry had mislaid the assembly instructions, as what was emerging from behind the hoardings looked like a very large, very complicated, purchase from IKEA that had indeed arrived without the benefit of the aforementioned assembly instructions. The odd angles of the structure with bits of metal dangling from the wooden beams does, at first glance, look a mess, but then this is art, isn't it? The pilgrimage to the Pavilion was made, and to be honest, I was disappointed with the rather plain and uninspiring interior of what from the outside looked as though it was going to be a wacky and vibrant public space.

Of all the pavilions we've seen so far, my vote goes to that of Oscar Neimeyer in 2003. As for Mrs Lurot her preference is for the 2007 pavilion.

If you'd like to have a look for yourselves but can't remember what they looked like, you can refresh your memory by visiting the website [www.serpentinegallery.org/architecture](http://www.serpentinegallery.org/architecture).

Simon Powley



# MEWS PROPERTIES FOR SALE



LEINSTER MEWS, W2 £5,950,000 Freehold



HAYS MEWS, W1 £3,500,000 Leasehold



MONTPELIER MEWS, SW7 £2,995,000 Freehold



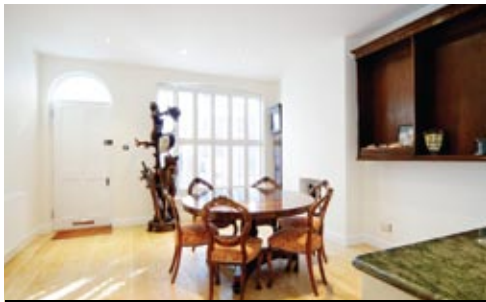
ADAM & EVE MEWS, W8 £2,500,000 Freehold



CONDUIT MEWS, W2 £2,100,000 Freehold



PRINCES GATE MEWS, SW7 £1,950,000 Freehold



KYNANCE MEWS, SW7 £1,950,000 Freehold



EASTBOURNE MEWS, W2 £1,500,000 Freehold



ROOM PLACE, SW1 £1,495,000 Leasehold



ECCLESTON SQUARE MEWS, SW1 £1,250,000 Freehold



KYNANCE MEWS, SW7 £1,200,000 Freehold



ALBA PLACE, W11 £995,000 Freehold



OLD MANOR YARD, SW5 £895,000 Freehold



COLVILLE HOUSES, W11 £850,000 Freehold



CORNWALL MEWS SOUTH, SW7 £750,000 Freehold



QUEEN'S GATE MEWS, SW7 £750,000 Freehold



WAVEL MEWS, NW6 £725,000 Freehold



DEVONSHIRE CLOSE, W1 £625,000 Leasehold

# SELECTION OF PROPERTIES TO RENT



LEINSTER MEWS, W2 £5,500 PW UN/FURNISHED



ALBION STREET, W2 £1,500 PW UN/FURNISHED



CONDUIT MEWS, W2 £1,650 PW UN/FURNISHED



PRINCES GATE MEWS, SW7 £1,600 PW FURNISHED



NAPIER PLACE, W14 £1,500 PW UN/FURNISHED



HYDE PARK GDNS MEWS, W2 £1,350 PW UN/FURNISHED



EASTBOURNE MEWS, W2 £995 PW UN/FURNISHED



HYDE PARK GDNS MEWS, W2 £995 PW UN/FURNISHED



SPEAR MEWS, SW5 £795 PW UN/FURNISHED



CORNWALL GDNS COURT, SW7 £795 PW FURNISHED



CORNWALL MEWS SOUTH, SW7 £725 PW UN/FURNISHED



ST PETERSBURGH MEWS, W2 £725 PW FURNISHED



STANHOPE ROW, W1 £700 PW FURNISHED



CONDUIT MEWS, W2 £695 PW FURNISHED



BATHURST MEWS, W2 £650 PW UN/FURNISHED



BROOKS MEWS, W1 £600 PW UN/FURNISHED



BRIDSTOW PLACE, W2 £595 PW UN/FURNISHED



PORTOBELLO ROAD, W11 £530 PW FURNISHED

# LUROT BRAND PROPERTY MANAGEMENT

## WE CAN HELP YOU WITH THE SMOOTH RUNNING OF YOUR INVESTMENT PROPERTY WITH A TAILOR MADE MANAGEMENT SERVICE

From our Marylebone office, Anne Roche and her team offer a comprehensive Management service. This service can be modified to provide as little or as much as Landlords require. It includes:

- Initial meeting with new Client to discuss property in detail;
- Meeting new tenants with a "Welcome Pack" which includes laminated lists of emergency numbers;
- Routine repairs and maintenance;
- Safety regulations including Gas Certificates and EPCs;
- Payment of outgoings;
- Routine Inspections with written report supplied;
- Dealing with utilities, and much more.

We have many testimonials from Landlords attesting to Anne's efficiency and care and this is evidenced each Christmas by the number of flowers, plants and chocolates

delivered to our office to thank her.

**To discuss this service, please telephone Anne Roche on O20 7479 1913.**



LEDBURY MEWS NORTH, LET & MANAGED BY LUROT BRAND

## LOCAL NEWS

### WAITROSE OPENING

At last the Hyde Park Estate and the surrounding area will be getting its own Waitrose. They will be opening on the site of Woolworths in Edgware Road on the 27th November. Marylebone is well served with a branch in Marylebone High Street and the Food Hall in John Lewis. Equally, South Kensington has a branch on the corner of Gloucester Road and Cromwell Road. So, at last, all three areas where we have shops will have their local Waitrose.

### WINTER WONDERLAND 2008

Don't forget dazzling Winter Wonderland is opening in Hyde Park from 22nd November to 4th January. This annual fair provides entertainment for everyone, with an ice rink, giant observation wheel, a toboggan slide, carousel, carol concerts and a German arts & crafts market. It is free to enter but you have to pay extra for ice-skating and additional attractions. [www.hydeparkwinterwonderland.com](http://www.hydeparkwinterwonderland.com)

## LUROT BRAND

5 Kynance Place, SW7 4QS  
O20 7590 9955

37-41 Sussex Place, W2 2TH  
O20 7479 1999

57A Weymouth Street, WIG 8NW  
O20 7479 1900

[www.lurotbrand.co.uk](http://www.lurotbrand.co.uk)

Extra copies of Mews News are available on request; email: [info@lurotbrand.co.uk](mailto:info@lurotbrand.co.uk)

