



# Queen's Gate Mews, SW7

**LUROT BRAND**

MEWS SPECIALISTS EST. 1971

020 7590 9955  
[lettings@lurotbrand.co.uk](mailto:lettings@lurotbrand.co.uk)



First Floor

Second Floor



# Queen's Gate Mews, SW7

Unfurnished

£1,153 PW

---

A stylish three bedroom mews house set within a residential mews in South Kensington.

The accommodation is arranged on three levels. The ground floor comprises a dining area with open plan kitchen, separate guest cloakroom, private garage and staircase leading to the fabulous reception room with oak wood flooring. The top floor comprises of the master bedroom with en-suite bathroom, two further bedrooms and second bathroom.

## LOCATION

Queen's Gate Mews is tucked away in this lovely, cobbled mews moments from the amenities of Gloucester Road and South Kensington.



Second Floor

First Floor





Street

FEATURES

Kitchen/Dining Room	Family Bathroom
Reception Room	Garage
Three Bedrooms	WC
One En Suite Bathroom	

OTHER USEFUL INFORMATION

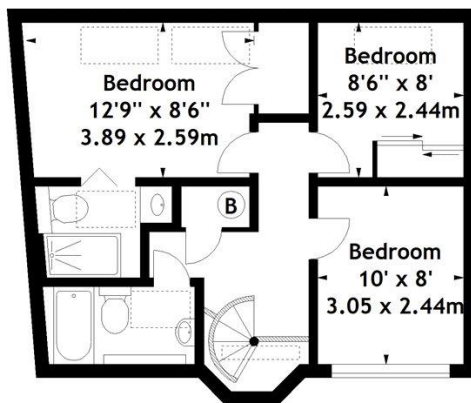
EPC	D
Council Tax Band	H
Deposit Amount	£6,918.00

NEAREST TUBE STATIONS

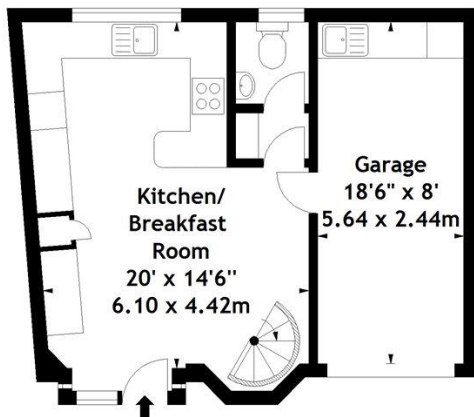
Gloucester Road (District, Circle & Piccadilly line)



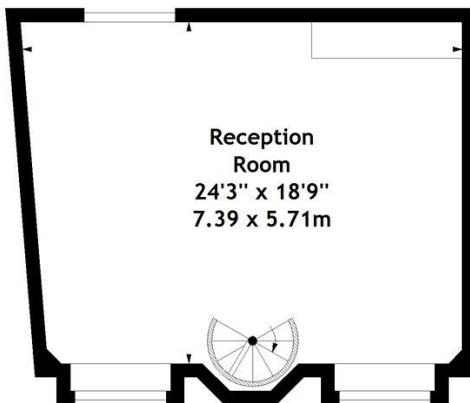
Queen's Gate Mews, SW7  
 Approx. Gross Internal Area  
 1346 Sq Ft - 125.04 Sq M  
 (Including Garage)



Second Floor



Ground Floor



First Floor

Measured in accordance with RICS guidelines. Every attempt is made to ensure accuracy, however all measurements are approximate. This floor plan is for illustrative purposes only and is not to scale.

© Datagraphy Ltd 2016  
 Photographs \* Floorplans \* Virtual Tours  
 Tel: 0845 643 4401 [www.datagraphy.com](http://www.datagraphy.com)

Hyde Park  
37-41 Sussex Place, Hyde Park,  
London W2 2TH

South Kensington  
4-5 Kynance Place, South Kensington,  
London SW7 4QS

**WWW.LUROTBRAND.CO.UK**



Members of NAEA, ARLA, onthemarket.com. Lurot Brand (2) Limited T/A Lurot Brand. Registered in England No. 02035540. Registered Office: 37-41 Sussex Place, London, W2 2TH. VAT No. 629 099 505. [www.lurotbrand.co.uk](http://www.lurotbrand.co.uk)

---

We have produced these sales particulars as a general guide. We have not carried out a detailed survey of the property and have not tested the services, appliances, or specific fittings. Room sizes are for general guidance purposes and should not be relied upon for fitting carpets or furnishings. Pictures may have been digitally enhanced. Floor plans are not to scale. Fittings shown on floor plans may not match the actual layout or size of fittings at the property. None of the statements as to the property contained in these particulars are to be relied upon as statements or representations of fact. All statements in these particulars as to this property are made without responsibility on the part of Lurot Brand. The Seller does not make or give and neither Lurot Brand or any person in their employment has any authority to make or give any representation or warranty whatever in relation to this property.