

LUROT BRAND



MEWS NEWS

www.lurotbrand.co.uk

AUTUMN 2009



THE MEWS TEAM VISITS THE ROYAL MEWS

A few months ago, I was flattered to be invited to give a talk to the Norland Conservation Society about the Mews of London. During my discourse, I was forced to admit that even though Lurot Brand are the mews experts, many of the current crop of staff (including myself) had never been to the Royal Mews at Buckingham Palace! This needed to change, so I booked some tickets and on a lovely day at the end of June, Lurot Brand descended upon

the Grandest Mews of them all. By 11am, it was 32°C and walking around the quad in suits was a heated affair so we quickly ducked into the various stables and carriage rooms. Some were filled with horses, others with some of the most amazing carriages. The Gold State Coach has to be the most impressive (if dare I say, slightly vulgar) carriage in the world. The craftsmanship is quite amazing with the panels depicting allegorical scenes painted

by Florentine artist Giovanni Battista Cipriani. According to the guidebook, the carriage is so heavy and the suspension so poor (virtually non existent) that any speed faster than a slow walk makes the occupant feel sick. King George VI described his coronation procession as 'one of the most uncomfortable rides I have ever had in my life'.

There are many other coaches, horses and stories to discover around each corner and if there are not too many visitors, you are reminded by the hustle and bustle of the grooms, coachmen and chauffeurs that this is after all a working mews that also houses the queens five Rolls Royce Phantoms, some of which are on display.

The Royal Mews was built between 1822 and 1825 in the gardens of Buckingham Palace to a design by John Nash and is well worth a visit whether you are a mews aficionado or not, but if you are, you will really appreciate it.

For opening hours and more info visit: www.royalcollection.org.uk

Oliver Lurot



SHERLOCK MEWS, W1
£1,350,000 FREEHOLD



SPEAR MEWS, SW5
£1,795,000 FREEHOLD



PINDOCK MEWS, W9
£1,995,000 FREEHOLD



KYNANCE MEWS, SW7
£1,150 PW UNFURNISHED



LANCASTER MEWS, W2
£895 PW UN/FURNISHED



CRAVEN HILL MEWS, W2
£1,100 PW UN/FURNISHED

GRAND DESIGN



BEFORE

In April 2006 Sanju and Andrew Shillam exchanged contracts to purchase a large and rather tired mews house in Buckingham Mews SW1 – a quiet, private mews of six houses. This particular house was going to become the Shillam's new family home.

Having recently sold his business, Andrew had some spare capital to invest in the property market and had decided that a complete refurbishment project was the order of the day. With the exchange of contracts under his belt, he set about finding an architect to assist with the design of the project and found through Lurot Brand, Phillip Pearlman of P+R Associates. Together, the Shillams and Phillip (with a little help from Lurot Brand) sat down and worked out how the mews could be transformed from its previous guise as a rental flat above a huge six car garage into a family house.

For six months or so while planning consent was sought from Westminster Council, the property reverted to a short term rental. The plan had initially been to dig a basement and add a floor to the property, but having been refused at appeal, the Shillams settled for a basement dig and complete refurbishment of the upper two floors but with the addition of a terrace. With the tenants gone and the builders ready, demolition work started on the daunting task of creating a basement and virtually rebuilding the rest of the house.

One of the first things to be done was

to decide on what was wanted from the project and to get the tenders from the various building contractors. Here came the first shock. The tenders came in rather higher than



WORK IN PROGRESS

expected. Removing something over 300 cubic metres of earth to create the basement was not going to be cheap. Despite the higher tender costs the

budget was not exceeded – and for one very good reason. The detailed brief put forward to the builders varied very little throughout the project. This was to prove critical in halting the “additional costs” which can spiral out of control and force the overall budget through the roof. It had been decided to carry out the project in two halves, first would be the digging for which an estimated 20 weeks had been allocated, followed by the rebuilding of the upper parts, here the estimated time frame was to be 30 weeks. It seems these estimates would prove to be short with the overall project taking some 64 weeks to complete. The worst part of the whole thing was the basement, but with good project management everything was always under control. With the project now complete, the Shillams can reflect on what are the best features of the house.

Undoubtedly one of the most striking features is the huge mirrored lightwell plunging through the house and giving light and air to all levels. Unlike many mews houses with newly created basements, this one has masses of natural light and air. If you didn't know it was a basement, you could be forgiven for thinking it was the ground floor! This together with the location of the house, moments away from the hustle and bustle of Victoria and the open spaces of St James's Park makes this house ideal for the Shillam family.

Simon Powley



AFTER

CATCH A FIREFLY... IN A MEWS



A few years ago, Firefly, the makers of the delicious and healthy energy drinks moved into Petersham Mews, just around the corner from our South Kensington Office. They moved there from Kensington Church street at the end of 2005 and they haven't looked back! They told us that the mews offers the perfect office environment for young, creative entrepreneurs – and that it is of course incredibly handy to have a garage for storage. They have also taken on the “mews spirit” by having plants and a nice wooden table outside their office. We also have a garage in the mews and often see them brainstorming outside!

Firefly was founded in 2004 by school friends Marcus Waley-Cohen and Harry Briggs. Marcus and Harry identified a group of consumers that wanted more energy but were not prepared to compromise their health by drinking artificial, sugary energy drinks. So they set out to make a new range of drinks that would deliver an energy boost, but using only natural and healthy ingredients.

Firefly now employs 7 members of staff and sells their drinks in 40 countries, and recently sold its 10 millionth bottle!

ISIS IN HYDE PARK

See your name go down in history...

Isis, a beautiful bronze sculpture, was unveiled on the shores of the Serpentine in Hyde Park on 7 September 2009. Generously donated by the Halcyon Gallery, Isis is in the abstracted form of a wading bird and is the figurehead of the Look Out appeal, an ambitious project to build a much-needed new education centre in Hyde Park.

The sculpture is dedicated to the Egyptian goddess of nature and was created by leading British sculptor Simon Gudgeon. 1,000 individual plaques are inlaid in a curving Fibonacci pattern at the base of Isis. Each plaque is available for a personal inscription to help raise over £1m for Look Out. Plaque dedications cost £1,000 giving individuals the unique opportunity to have their name, or that of a loved one, inscribed in perpetuity in one of the world's most beautiful parks.

“We have already had an amazing response to this appeal” says Sara Lom, Chief Executive of The Royal Parks Foundation, the charity for the eight Royal Parks. “People have dedicated plaques to parents, children and godchildren - some have even honoured their dogs! It's a lovely way to celebrate a life and at the same time help transform the education centre so that even more young people can learn about the environment and the natural world in our city”.

Mayfair exhibition

To coincide with the unveiling of Isis,



the Halcyon Gallery is hosting an exhibition telling the story of the sculpture's development and creation. It showcases several versions of Isis in a wide range of sizes and materials, as well as featuring a number of other large-scale works by the artist. Do go and see the exhibition for yourself at 24 Bruton Street, Mayfair www.halcyongallery.com

To have your own personalised plaque placed at the base of Isis visit: www.royalparksfoundation.org, email: hcottrill@royalparksfoundation.org tel: 020 7298 2136



PembrokeMews, W8

In August 1994, Lurot Brand sold an un-restored, period mews house. It had been used as a blacksmith's forge continuously since 1929 which provided a historic link to the time when horses were still stabled in the mews and the services of the blacksmith and farrier were much in demand.

BACK TO SCHOOL

Full of summer souvenirs in our pockets we can go back to school. We have selected few schools in mews for you:



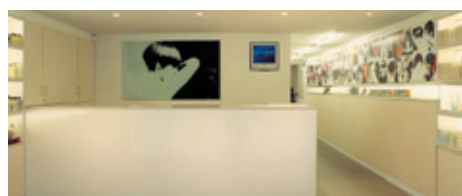
HYDE PARK STABLES offers riding and riding lessons all year round in Central London on horses and ponies chosen for their safe temperament. Their riding stables cater for riders of all abilities, previous experience is not necessary. They take adults and children for group, private rides and riding lessons. Address: 63 Bathurst Mews, W2 2SB | 020 7723 2813 | www.hydeparkstables.com



ROSS NYE STABLES offers riding in Hyde Park. They welcome all, whether adults or children, beginners or experienced, for a gentle hack on the 5 miles of riding tracks, or a course of lessons in one of the two outdoor arenas. There are regular newsletters, a membership scheme, lessons in stable management, outings to famous horsey events, and social activities. Children from 6 years old. Closed Mondays. Address: 8 Bathurst Mews, W2 2SB | 020 7262 3791 | www.rossnyestables.co.uk



THE LONDON SCHOOL OF JOURNALISM provides journalism courses, freelance classes and creative writing courses by distance learning, and as evening classes, short day-time courses and postgraduate diploma courses. Established for over 90 years, they offer a wide range of distance learning and attendance courses to help you further your career as a writer or to train you to become a journalist. Address: 126 Shirland Road, W9 2BT | 020 7289 7777 | www.lsj.org



VIDAL SASSOON SCHOOL OF HAIRDRESSING in Davies Mews offers an array of courses for all levels, from complete beginners starting their career to the top stylist wishing to refresh their inspiration and techniques to keep at the top of their game. The Academy is a relaxed and welcoming environment with a vast mix of ages and nationalities creating an inspiring, hi-energy buzz of excitement and passion for learning. Address: 56 Davies Mews, W1K 5AB | 020 7399 6902 | www.sassoon.com

THE MEWS CHILDREN

A VILLAGE IN LONDON

FROM A CORRESPONDENT

Children love a little door. It seems exciting and suitable to their size. How many a child has vainly tried to fit herself into her dolls' house and longed to go up and down the stairs? Alice as an overgrown monster has frightened some children, but the tiny Alice is envied.

Children who visit the Mews take pleasure in the small green door cut in the big ones that would fold back and lay bare my dwelling (much as the old-fashioned dolls' houses were exposed to the view) if cars had to go in and out. There is no car and the big doors remain shut, pretending to be the real front of a real house. The Mews children think my door very absurd, although it is taller than the tallest boy, who is nine. Their own doors are full size and open direct upon ladder-like stairs. Mine attracts them irresistibly, and they hop about outside it like sparrows and invent excuses to bang on the knocker and get a look inside. No cars, no petrol tins, what an odd interior!

One of the most engaging small boys in London, Benny, aged six, inhabits the Mews, a child so fragile that he is more often at home from school than not. He

is a most confiding visitor. His slanting blue eyes, curious, amused, dancing, miss nothing; his voice is low and husky; he controls his world by an effortless charm. "Miss, I wouldn't eat anything but cheese for breakfast to-day and my father says it's for the last time!" He grins. He summarizes his older brother's character for me. "Miss, my brother Roger has no mind at all! He took my lunch and the bottle of milk what I ought to have into his school yesterday, and I never got any. I did laugh!" His chuckle is intensely amused. He knocks and then pushes a fat little girl of four almost into my kitchen. "Can Barbara see your Chinese cat?" he asks, imitatively cajoling. "She doesn't believe its tail is like a snake." Benny likes impressing Barbara. I saw him lead her to a newly painted wall and display a piece of chalk. "I can write on walls, Barbara. Would you like me to write something for you?" He traced laborious signs. "Now I'll read you what I've written. DO—NOT—SPIT. I wrote that, Barbara." His voice was as bland as the announcer of the B.B.C.

An older boy rivals Benny in the number of times he has been ill. "Miss, tonsils is nothing. I've been in hospital 11 times. Three broken legs, me arm broke, mastoid, and I went under another operation and scarlet fever." The Mews children adore going to hospital, and when the inevitable tonsils operation is ordered

by the school they rush to tell me the proud news. "And I'll come home in the ambulance. It's lovely." Only one child has a taste for books. "I hate fairies and girls. I want a grown-up Robertson Crusoe." They love "the pictures," but it was a mistake to take them to a long reel about penguins. This year the Mews has all gone Wolf Cub. Startlingly clean knees, hands, and faces are displayed at least once a week. A cub was heard saying to his mother, "Wasn't it lucky for her to meet us when we looked so smart?"

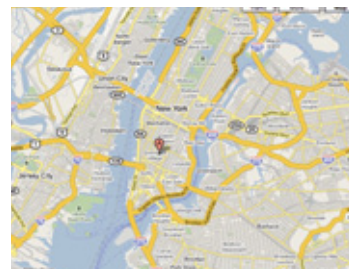
Birthdays and summer holidays are fair occasions for a hint. "When Caroline went to her granny's you gave her sixpence. I'm going to my aunty at the sea." "Miss, you said when I was eight you'd remember it and to-morrow I will be." There are no hints at all at Christmas. These children always get cars as their chief present, with real lights and other interesting fittings "just like my father's car."

At the present moment the Mews children are considering coming inside the small door to give an unaided and original entertainment. The date will be between September and Christmas, but already programmes are daily submitted for inspection. On the last one a rather ambitious list included a play, songs, violin, and an acrobatic performance; it ended with—"a solo by all the acrobats, GOD SAVE THE KING."

MEWS WORLD QUEST

We have started scouring the ends of the earth to bring you traditional mews or modern upstarts. The first one we have found is Washington Mews in New York.

Washington Mews is a private gated street in New York City between 5th Avenue and University Place, north of Washington Square Park. It was originally a complex of stables that serviced horses from homes in the area. The stables were converted to housing as well as offices and other facilities for New York University. The original brick roads are still largely intact with an old blue street sign, making this quiet street a beautiful surviving scene from New York's past. The houses on the south side of the alley, built in the 1930s, are younger than the original stables on the north side. Washington Mews is situated on land belonging to Stalen Island's Sailor's Snug Harbor, a former 19th century home for the aged, decrepit and worn-out sailors". Source: Wikipedia



LUROT BRAND

5 Kynance Place, SW7 4QS
020 7590 9955

37-41 Sussex Place, W2 2TH
020 7479 1999

57A Weymouth Street, WIG 8NW
020 7479 1900

www.lurotbrand.co.uk

Extra copies of Mews News are available on request; email: mewsnews@lurotbrand.co.uk



Member Firm



Founder Firm



Member Firm



Member Firm



Sponsors of the
London French Rugby
Football Club