



# Kynance Mews, SW7

**LUROT BRAND**

MEWS SPECIALISTS EST. 1971

020 7590 9955  
[sales@lurotbrand.co.uk](mailto:sales@lurotbrand.co.uk)



Ground Floor

Ground Floor

---



# Kynance Mews, SW7

Freehold

£2,000,000 STC

---

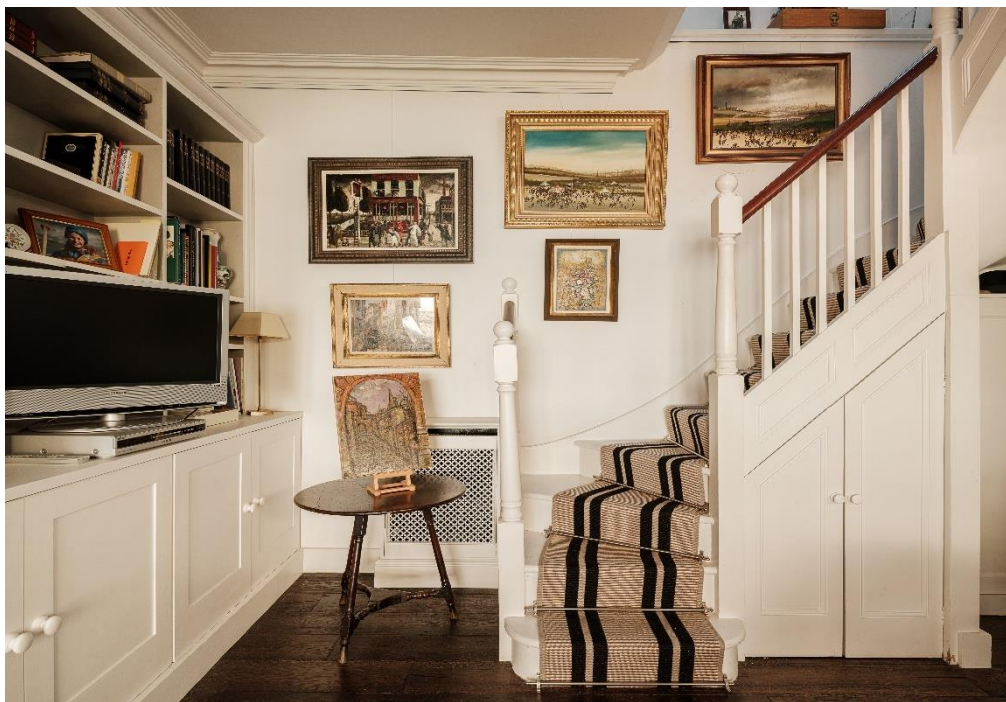
A charming two-bedroom mews house in one of the most picturesque mews in London.

This beautiful mews house sits in the cul-de-sac end of a highly coveted mews in the heart of Kensington. On the ground floor we find the large open plan living and dining room with fireplace, and a separate kitchen. The first floor hosts two double bedrooms with ensuite and separate bathroom, with convenient storage space. For a mews property, this home is particularly bright, benefitting from plenty of windows and skylights for natural light.

## LOCATION

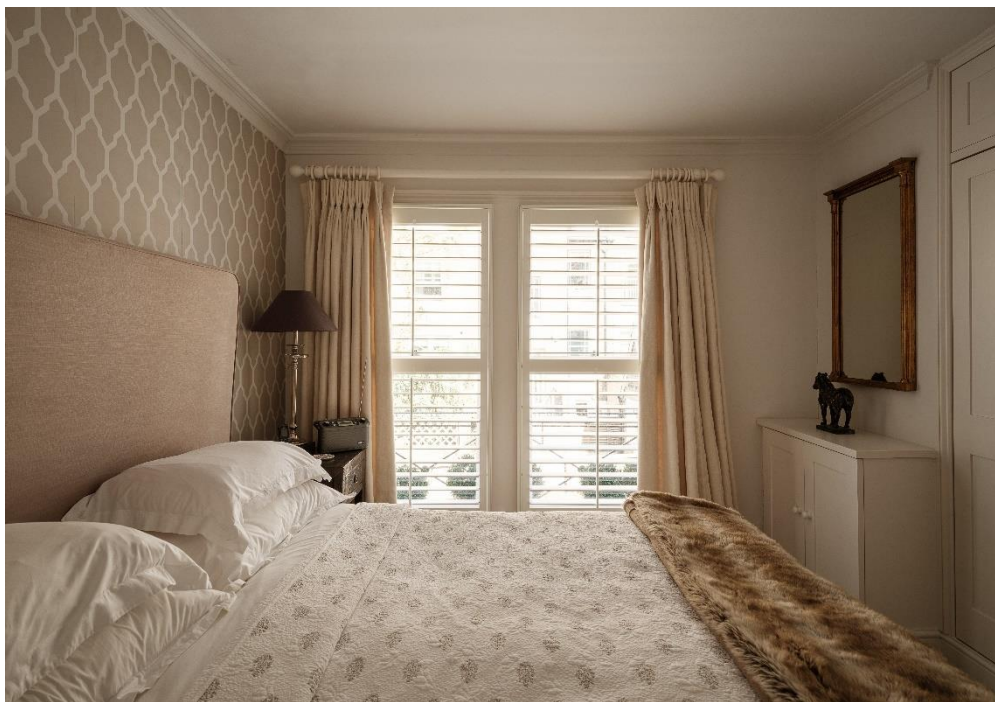
Situated in the tranquil, leafy neighbourhood of South Kensington, the cobbled mews is arguably one of the most attractive and desired mews streets in London. It also offers fantastic proximity to both High Street Kensington and Gloucester Road stations, whilst being moments away from Hyde Park and a wealth of interesting shops, bars, cafes, and restaurants.





Ground Floor

First Floor





Ground Floor

External



FEATURES

Kitchen	One Ensuite Bathroom
Living & Dining Room	Guest Bathroom
Two Bedrooms	Quiet Location

OTHER USEFUL INFORMATION

EPC	D
Council Tax Band	G

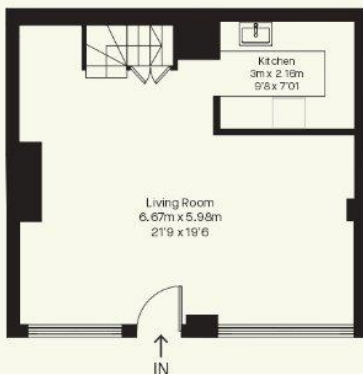
NEAREST TUBE STATIONS

Gloucester Road (Circle, District & Picadilly Lines)

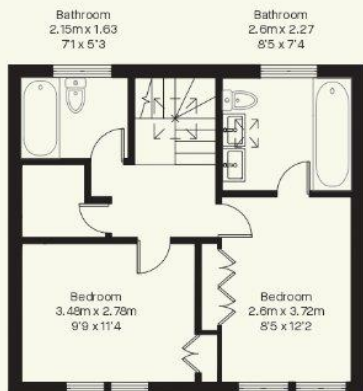
# Kynance Mews, SW7

Approximate Gross Internal Area

853FT<sup>2</sup> - 79.3M<sup>2</sup>



Ground Floor



First Floor

Whilst every attempt has been made to ensure the accuracy of the floorplan contained here, measurements of doors, windows, rooms and any other item are approximate and no responsibility is taken for any error, omission, or misstatement. This plan is for guidance only and must not be relied upon as a statement of fact. Attention is drawn to the important notice on the last page of the text of the particulars.

Hyde Park  
37-41 Sussex Place, Hyde Park,  
London W2 2TH

South Kensington  
4-5 Kynance Place, South Kensington,  
London SW7 4QS

**WWW.LUROTBRAND.CO.UK**



Members of NAEA, ARLA, onthemarket.com. Lurot Brand (2) Limited T/A Lurot Brand. Registered in England No. 02035540. Registered Office: 37-41 Sussex Place, London, W2 2TH. VAT No. 629 099 505. [www.lurotbrand.co.uk](http://www.lurotbrand.co.uk)

We have produced these sales particulars as a general guide. We have not carried out a detailed survey of the property and have not tested the services, appliances, or specific fittings. Room sizes are for general guidance purposes and should not be relied upon for fitting carpets or furnishings. Pictures may have been digitally enhanced. Floor plans are not to scale. Fittings shown on floor plans may not match the actual layout or size of fittings at the property. None of the statements as to the property contained in these particulars are to be relied upon as statements or representations of fact. Any reference to alterations to, or use of, any part of the property does not mean that any necessary planning, building regulations or other consent has been obtained. A buyer or lessee must find out by inspection or in other ways that these matters have been properly dealt with and that all information is correct.

All statements in these particulars as to this property are made without responsibility on the part of Lurot Brand. The Seller does not make or give and neither Lurot Brand or any person in their employment has any authority to make or give any representation or warranty whatever in relation to this property.