



# Queenstown Mews, SW8

**LUROT BRAND**

MEWS SPECIALISTS EST. 1971

020 7590 9955  
sales@lurotbrand.co.uk



First Floor

External



# Queenstown Mews, SW8

Freehold

£2,250,000 STC

---

**An exciting opportunity to own an entire mews.**

Queenstown Mews encapsulates the classic charm of mews with Victorian cobbles and traditional style architecture. Currently consisting of two large E rated commercial units with parking for four to eight cars on the private mews. Whilst this would make a charming office for any company, it offers considerable opportunity for redevelopment (subject to all necessary planning approvals).

## LOCATION

Queenstown Mews is just a short walk from the South-East corner of Battersea Park. With Queenstown Road over ground station only moments away, this has excellent transport links across London.



External

First Floor





Ground Floor

External



## FEATURES

Two Buildings

---

Garage

---

Five Offices

---

Off-Street Parking

---

## OTHER USEFUL INFORMATION

EPC

---

B

Council Tax Band

---

F

---

## NEAREST TUBE STATIONS

Queenstown Road (Overground lines)

---

---

# 1&2 Queenstown Mews, SW8

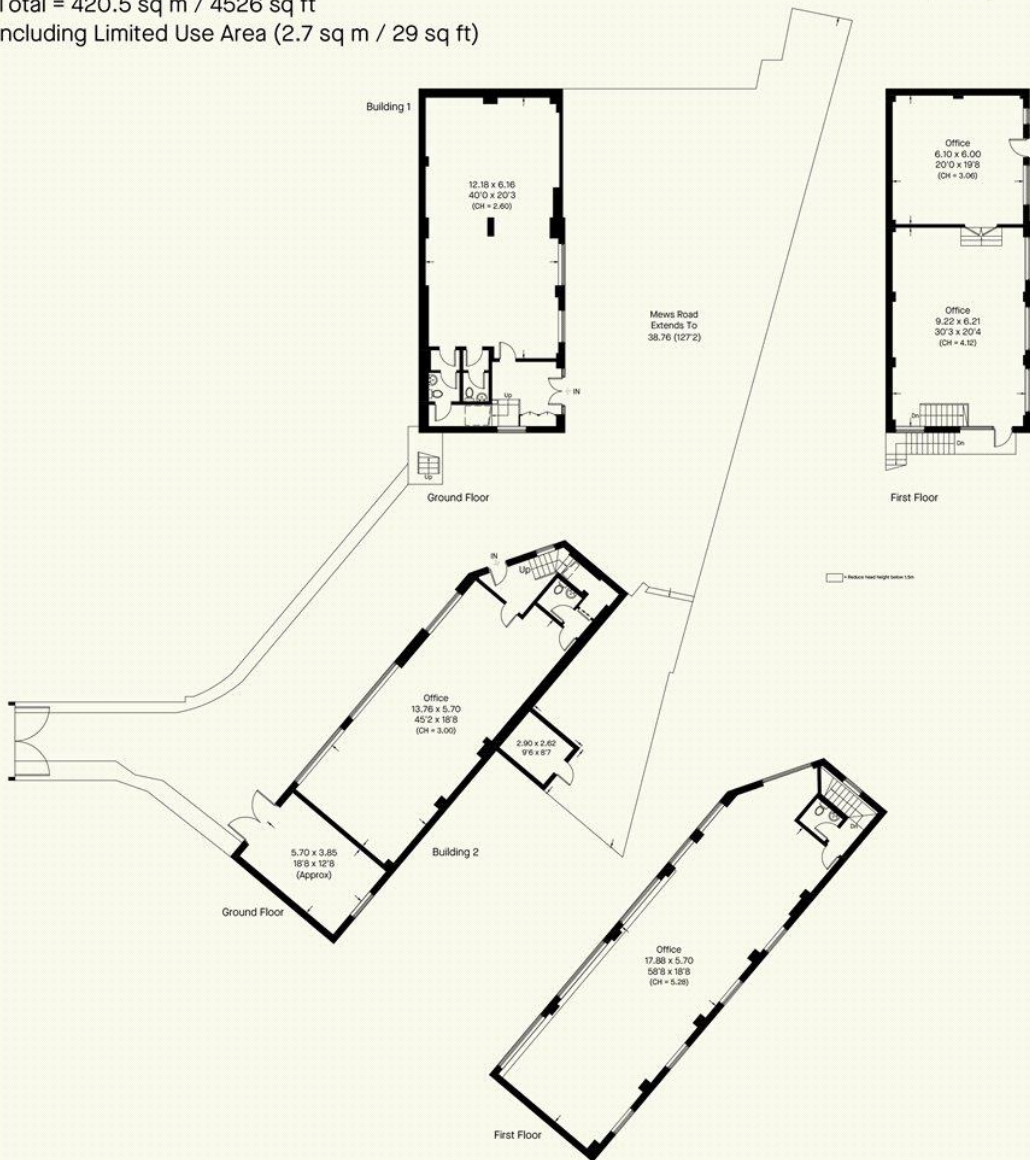
Approximate Area

Building 1 = 188.8 sq m / 2032 sq ft

Building 2 = 231.7 sq m / 2494 sq ft

Total = 420.5 sq m / 4526 sq ft

Including Limited Use Area (2.7 sq m / 29 sq ft)



Notting Hill  
8 Ladbroke Grove, Notting Hill,  
London W11 3BG

Hyde Park  
37-41 Sussex Place, Hyde Park,  
London W2 2TH

South Kensington  
4-5 Kynance Place, South Kensington,  
London SW7 4QS

[WWW.LUROTBRAND.CO.UK](http://WWW.LUROTBRAND.CO.UK)



Members of NAEA, ARLA, onthemarket.com. Lurot Brand (2) Limited T/A Lurot Brand. Registered in England No. 02035540. Registered Office: 37-41 Sussex Place, London, W2 2TH. VAT No. 629 099 505. [www.lurotbrand.co.uk](http://www.lurotbrand.co.uk)

We have produced these sales particulars as a general guide. We have not carried out a detailed survey of the property and have not tested the services, appliances, or specific fittings. Room sizes are for general guidance purposes and should not be relied upon for fitting carpets or furnishings. Pictures may have been digitally enhanced. Floor plans are not to scale. Fittings shown on floor plans may not match the actual layout or size of fittings at the property. None of the statements as to the property contained in these particulars are to be relied upon as statements or representations of fact. Any reference to alterations to, or use of, any part of the property does not mean that any necessary planning, building regulations or other consent has been obtained. A buyer or lessee must find out by inspection or in other ways that these matters have been properly dealt with and that all information is correct.

All statements in these particulars as to this property are made without responsibility on the part of Lurot Brand. The Seller does not make or give and neither Lurot Brand or any person in their employment has any authority to make or give any representation or warranty whatever in relation to this property.