



Ledbury Mews North, W11

LUROT BRAND

MEWS SPECIALISTS EST. 1971

020 7590 9955
sales@lurotbrand.co.uk



Ground Floor

Ground Floor



Ledbury Mews

North, W11

Leasehold Approx. 968 years and 7 months
(Exp. Feb 2992)

£600,000 STC

A lovely studio apartment in one of
Notting Hill's best Mews streets.

Ideally located just off Ledbury Road, this studio offers the perfect bolt hole or pied a terre in Notting Hill. The layout is functional and well apportioned. There is a separate shower, bathroom and kitchen and the studio space accommodates a reception space and bedroom easily. There is also plenty of additional storage throughout.

LOCATION

Ledbury Mews North is accessed from Ledbury Road in Notting Hill and takes full advantage of the of the boutiques, bars and restaurant that Westbourne Grove has to offer without any of the noise or disruption.



Ground Floor

Ground Floor





Ground Floor

Street



FEATURES

Kitchen

WC

Studio

Shower Room

OTHER USEFUL INFORMATION

EPC

D

Council Tax Band

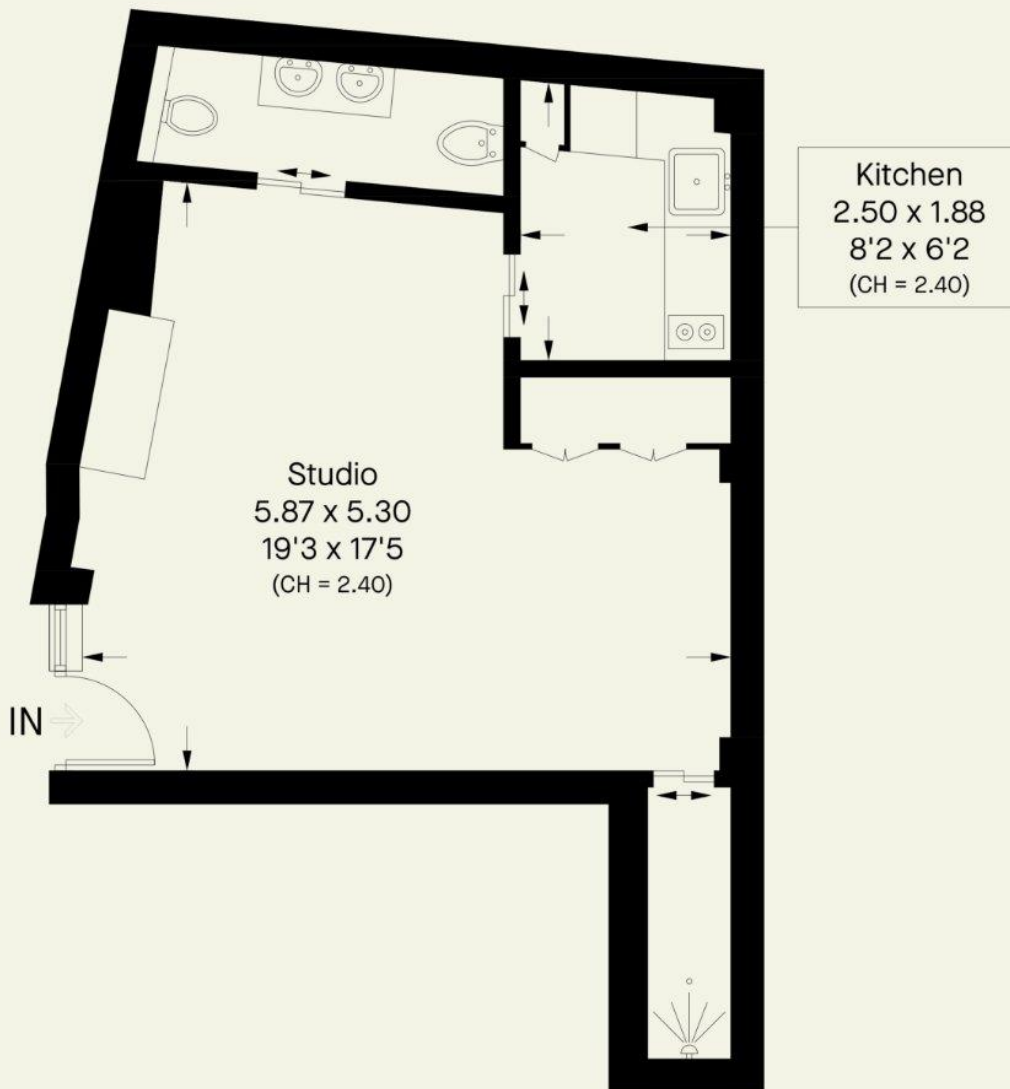
D

NEAREST TUBE STATIONS

Notting Hill Gate (Circle, District and Central lines)

Ledbury Mews North, W11

Approximate Area = 37.9 sq m / 408 sq ft



Whilst every attempt has been made to ensure the accuracy of the floor plan contained here, measurements of doors, windows, rooms and any other item are approximate and no responsibility is taken for any error, omission, or misstatement. Please check all dimensions before making a decision reliant upon them.

Notting Hill
8 Ladbrooke Grove, Notting Hill,
London W11 3BG

Hyde Park
37-41 Sussex Place, Hyde Park,
London W2 2TH

South Kensington
4-5 Kynance Place, South Kensington,
London SW7 4QS

WWW.LUROTBRAND.CO.UK



Members of NAEA, ARLA, onthemarket.com. Lurot Brand (2) Limited T/A Lurot Brand. Registered in England No. 02035540. Registered Office: 37-41 Sussex Place, London, W2 2TH. VAT No. 629 099 505. www.lurotbrand.co.uk

We have produced these sales particulars as a general guide. We have not carried out a detailed survey of the property and have not tested the services, appliances, or specific fittings. Room sizes are for general guidance purposes and should not be relied upon for fitting carpets or furnishings. Pictures may have been digitally enhanced. Floor plans are not to scale. Fittings shown on floor plans may not match the actual layout or size of fittings at the property. None of the statements as to the property contained in these particulars are to be relied upon as statements or representations of fact. All statements in these particulars as to this property are made without responsibility on the part of Lurot Brand. The Seller does not make or give and neither Lurot Brand or any person in their employment has any authority to make or give any representation or warranty whatever in relation to this property.