



# Spear Mews, SW5

**LUROT BRAND**

MEWS SPECIALISTS EST. 1971

020 7590 9955  
sales@lurotbrand.co.uk



Ground Floor

Ground Floor



# Spear Mews, SW5

Freehold

£3,500,000 STC

---

A fabulous five bedroom mews house with a large private garden and garage.

As you enter the house, you are immediately struck by the volume and light of the reception room and kitchen which lead out onto the exquisite private garden to the rear. The garden has been fitted with a heating and lighting system and a large awning allowing for use year-round, it really does feel like an extension of the house. There are three double bedrooms on the first floor and two bathrooms. The master bedroom with ensuite bathroom is generous in size and also benefits from access to the private balcony. Additionally, there is another bedroom on this floor and a shower room.

## LOCATION

Spear Mews is a quiet cobbled mews yet one of the best connected mews in Central London. Located just off the Earls Court Road, everything one needs is on your doorstep whilst enjoying all the benefits of a peaceful mews community.



Ground Floor

First Floor







Second Floor

Ground Floor



## FEATURES

Kitchen

---

Family Bathroom

---

Reception/Dining Room

---

Shower Room

---

Five Bedrooms

---

Garden

---

Two En Suite Bathrooms

---

Garage

---

## OTHER USEFUL INFORMATION

EPC

---

D

Council Tax Band

---

G

---

## NEAREST TUBE STATIONS

Earls Court (Piccadilly & District lines)

---

---

# Spear Mews, SW5

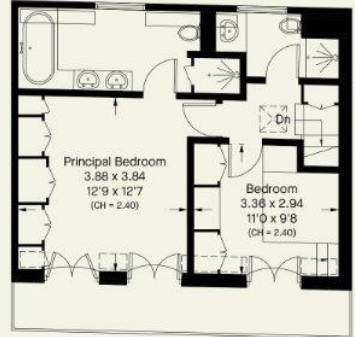
Approximate Area = 177.4 sq m / 1909 sq ft (Including Garage)  
Including Limited Use Area (4.1 sq m / 44 sq ft)



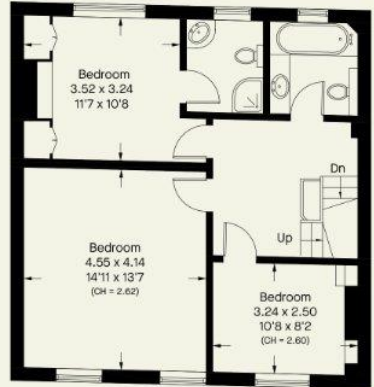
 = Reduce head height below 1.5m



Ground Floor



Second Floor



First Floor

Notting Hill  
8 Ladbroke Grove, Notting Hill,  
London W11 3BG

Hyde Park  
37-41 Sussex Place, Hyde Park,  
London W2 2TH

South Kensington  
4-5 Kynance Place, South Kensington,  
London SW7 4QS

[WWW.LUROTBRAND.CO.UK](http://WWW.LUROTBRAND.CO.UK)



Members of NAEA, ARLA, onthemarket.com. Lurot Brand (2) Limited T/A Lurot Brand. Registered in England No. 02035540. Registered Office: 37-41 Sussex Place, London, W2 2TH. VAT No. 629 099 505. [www.lurotbrand.co.uk](http://www.lurotbrand.co.uk)

N.B. This company name will change back to Lurot Brand Limited within the next 6 months. We have produced these sales particulars as a general guide. We have not carried out a detailed survey of the property and have not tested the services, appliances, or specific fittings. Room sizes are for general guidance purposes and should not be relied upon for fitting carpets or furnishings. Pictures may have been digitally enhanced. Floor plans are not to scale. Fittings shown on floor plans may not match the actual layout or size of fittings at the property. None of the statements as to the property contained in these particulars are to be relied upon as statements or representations of fact. All statements in these particulars as to this property are made without responsibility on the part of Lurot Brand. The Seller does not make or give and neither Lurot Brand or any person in their employment has any authority to make or give any representation or warranty whatever in relation to this property.