



# Radnor Mews, W2

**LUROT BRAND**

MEWS SPECIALISTS EST. 1971

020 7590 9955

[lettings@lurotbrand.co.uk](mailto:lettings@lurotbrand.co.uk)



Ground Floor

Ground Floor



# Radnor Mews, W2

Unfurnished

£1,269.23 PW

---

A beautifully refurbished three bedroom house in a lovely cobbled Mews.

The ground floor boasts a large entrance hall, downstairs water closet, separate utility room and a large brand new open plan kitchen living area.

The first floor offers three spacious bedrooms, family bathroom and separate shower room. There is ample storage throughout and due the house being double aspect, plenty of light floods the house.

The property is located a short walk from Lancaster Tube.

## LOCATION

Radnor Mews is a popular cobbled mews situated on the Hyde Park Estate with the local amenities of Connaught Village and Paddington close by. The green spaces of Hyde Park are a short walk away too.



Ground Floor

First Floor





First Floor

Ground Floor



## FEATURES

Open plan reception room	Separate guest wc
New appliances	Storage
Three bedrooms	
Two bathrooms	

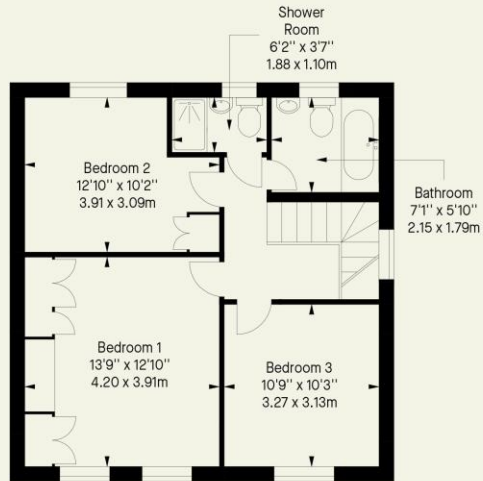
## OTHER USEFUL INFORMATION

EPC	D
Council Tax Band	G
Deposit Amount	£7,615.38

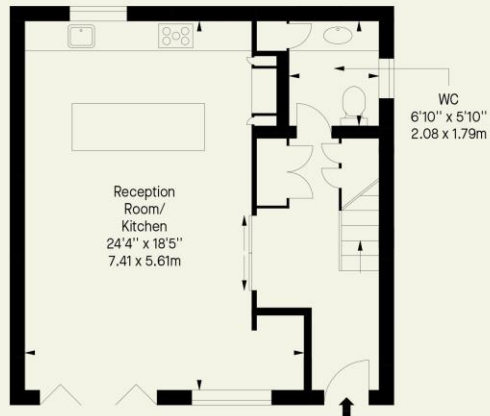
## NEAREST TUBE STATIONS

Lancaster Tube (Central Line), Paddington (Elizabeth,  
Bakerloo, Circle, District, Hammersmith & City Lines and  
Heathrow Express)

Radnor Mews, W2  
Approx. Gross Internal Area \*  
1131 Ft<sup>2</sup> - 105.07 M<sup>2</sup>



First Floor



Ground Floor

Whilst every attempt has been made to ensure the accuracy of the floor plan contained here, measurements of doors, windows, rooms and any other item are approximate and no responsibility is taken for any error, omission, or misstatement. Please check all dimensions before making a decision reliant upon them.

Notting Hill  
8 Ladbroke Grove, Notting Hill,  
London W11 3BG

Hyde Park  
37-41 Sussex Place, Hyde Park,  
London W2 2TH

South Kensington  
4-5 Kynance Place, South Kensington,  
London SW7 4QS

**WWW.LUROTBRAND.CO.UK**



Members of NAEA, ARLA, onthemarket.com. Lurot Brand (2) Limited T/A Lurot Brand. Registered in England No. 02035540. Registered Office: 37-41 Sussex Place, London, W2 2TH. VAT No. 629 099 505. [www.lurotbrand.co.uk](http://www.lurotbrand.co.uk)

---

We have produced these sales particulars as a general guide. We have not carried out a detailed survey of the property and have not tested the services, appliances, or specific fittings. Room sizes are for general guidance purposes and should not be relied upon for fitting carpets or furnishings. Pictures may have been digitally enhanced. Floor plans are not to scale. Fittings shown on floor plans may not match the actual layout or size of fittings at the property. None of the statements as to the property contained in these particulars are to be relied upon as statements or representations of fact. All statements in these particulars as to this property are made without responsibility on the part of Lurot Brand. The Seller does not make or give and neither Lurot Brand or any person in their employment has any authority to make or give any representation or warranty whatever in relation to this property.