



Bathurst Mews, W2

LUROT BRAND

MEWS SPECIALISTS EST. 1971

020 7590 9955

lettings@lurotbrand.co.uk



Ground Floor

Ground Floor



Bathurst Mews, W2

Unfurnished

£995 PW

Introducing this stunning mews house located in a prime residential area, offering three spacious bedrooms and a contemporary design

This unfurnished property boasts a modern and stylish interior, flooded with natural light throughout. The open-plan layout creates a bright and airy atmosphere, perfect for both relaxing and entertaining. With high-quality finishes and fixtures, this home exudes elegance and sophistication. Don't miss the opportunity to make this beautiful property your new home. Contact us today to arrange a viewing.

LOCATION

Bathurst Mews is located a short walk from the shops and amenities of Paddington and Connaught Village.



Ground Floor

Ground Floor





Ground Floor

Ground Floor



FEATURES

3 Bedrooms

2 Bathrooms

Modern Finish

Open Plan Living Kitchen

OTHER USEFUL INFORMATION

EPC D

Council Tax Band G

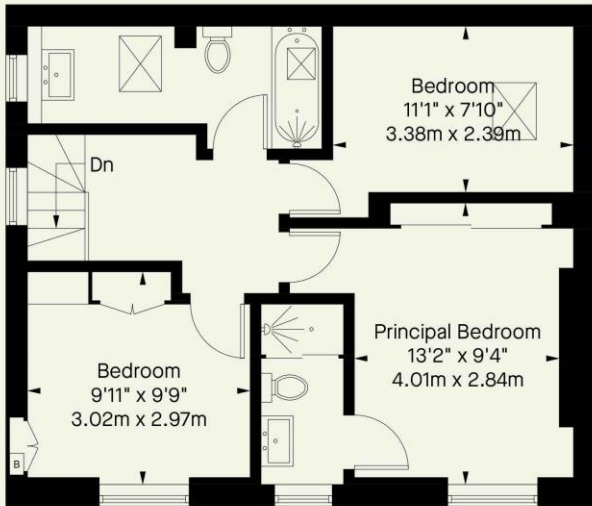
Deposit Amount £5,970.00

NEAREST TUBE STATIONS

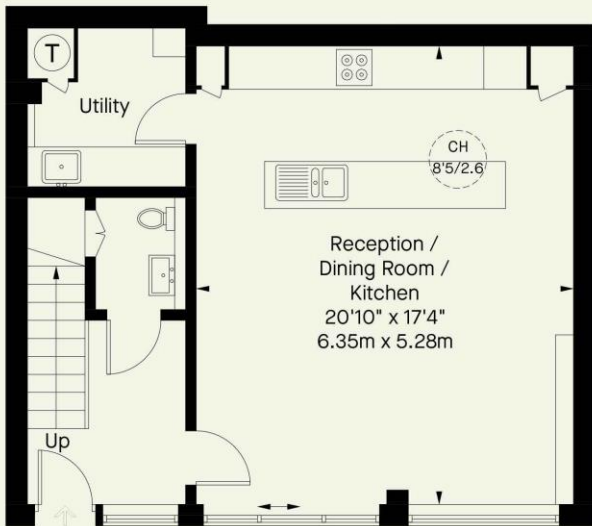
ancaster Gate (Central line) and Paddington (Overground,
Bakerloo, Circle, District, and Hammersmith & City lines)

Bathurst Mews, W2

Approximate Gross Internal Area
1048 FT² - 97.4 M²



First Floor



Ground Floor

Whilst every attempt has been made to ensure the accuracy of the floorplan contained here, measurements of doors, windows, rooms and any other item are approximate and no responsibility is taken for any error, omission, or misstatement.

This plan is for guidance only and must not be relied upon as a statement of fact.

Attention is drawn to the important notice on the last page of the text in the particulars.

Notting Hill
8 Ladbrooke Grove, Notting Hill,
London W11 3BG

Hyde Park
37-41 Sussex Place, Hyde Park,
London W2 2TH

South Kensington
4-5 Kynance Place, South Kensington,
London SW7 4QS

WWW.LUROTBRAND.CO.UK



Members of NAEA, ARLA, onthemarket.com. Lurot Brand (2) Limited T/A Lurot Brand. Registered in England No. 02035540. Registered Office: 37-41 Sussex Place, London, W2 2TH. VAT No. 629 099 505. www.lurotbrand.co.uk

We have produced these sales particulars as a general guide. We have not carried out a detailed survey of the property and have not tested the services, appliances, or specific fittings. Room sizes are for general guidance purposes and should not be relied upon for fitting carpets or furnishings. Pictures may have been digitally enhanced. Floor plans are not to scale. Fittings shown on floor plans may not match the actual layout or size of fittings at the property. None of the statements as to the property contained in these particulars are to be relied upon as statements or representations of fact. All statements in these particulars as to this property are made without responsibility on the part of Lurot Brand. The Seller does not make or give and neither Lurot Brand or any person in their employment has any authority to make or give any representation or warranty whatever in relation to this property.