



Redfield Mews, SW5

LUROT BRAND

MEWS SPECIALISTS EST. 1971

020 7590 9955

lettings@lurotbrand.co.uk



Second Floor

Ground Floor



Redfield Mews, SW5

Unfurnished

£900 PW

A lovely mews house situated in the heart of Earl's Court in a gated mews street.

The property boasts a large fully fitted kitchen with double doors leading to a good sized reception room. The first floor offers two good sized double bedrooms with two bathrooms and built in storage. The top floor can be used as a bedroom or second reception room and has patio doors leading onto a large wrap around terrace. The house is located in the heart of Earls Court with easy access to Earls Court Station, the shops and amenities that Earls Court has to offer and easy access to the M4 out of London.

LOCATION

Redfield Mews is a gated, cobbled mews, and consists of only four houses. Access is from the quiet Redfield Lane, just moments from the amenities and transport links of Earl's Court.



Ground Floor

Ground Floor





Ground Floor

Ground Floor



FEATURES

Three Bedrooms

Two Bathrooms

Roof Terrace

Great Location

Gated Mews

OTHER USEFUL INFORMATION

EPC

D

Council Tax Band

G

Deposit Amount

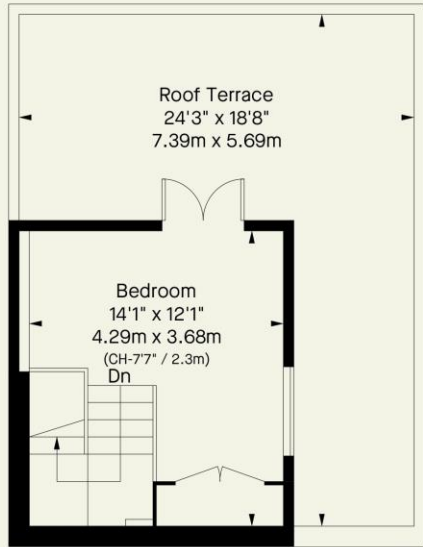
£4,500.00

NEAREST TUBE STATIONS

Earls Court (District and Piccadilly line)

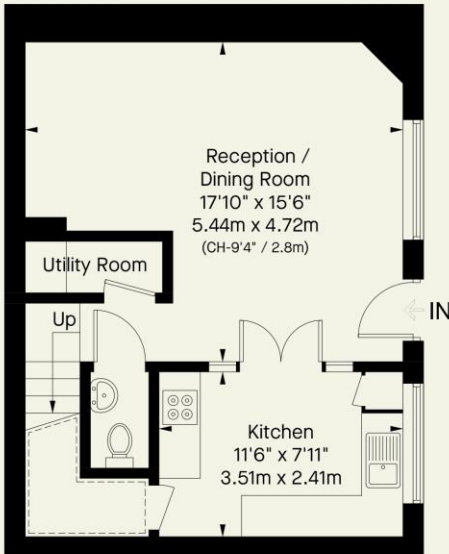
Redfield Mews, SW5

Approximate Gross Internal Area
1043 FT² - 96.9 M²

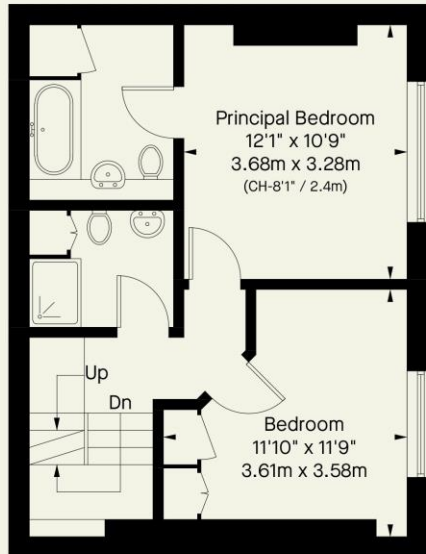


 = Reduced headroom below 1.5m / 5'0

Second Floor



Ground Floor



First Floor

Notting Hill
8 Ladbroke Grove, Notting Hill,
London W11 3BG

Hyde Park
37-41 Sussex Place, Hyde Park,
London W2 2TH

South Kensington
4-5 Kynance Place, South Kensington,
London SW7 4QS

WWW.LUROTBRAND.CO.UK



Members of NAEA, ARLA, onthemarket.com. Lurot Brand (2) Limited T/A Lurot Brand. Registered in England No. 02035540. Registered Office: 37-41 Sussex Place, London, W2 2TH. VAT No. 629 099 505. www.lurotbrand.co.uk

We have produced these sales particulars as a general guide. We have not carried out a detailed survey of the property and have not tested the services, appliances, or specific fittings. Room sizes are for general guidance purposes and should not be relied upon for fitting carpets or furnishings. Pictures may have been digitally enhanced. Floor plans are not to scale. Fittings shown on floor plans may not match the actual layout or size of fittings at the property. None of the statements as to the property contained in these particulars are to be relied upon as statements or representations of fact. All statements in these particulars as to this property are made without responsibility on the part of Lurot Brand. The Seller does not make or give and neither Lurot Brand or any person in their employment has any authority to make or give any representation or warranty whatever in relation to this property.