



# Redfield Lane, SW5

**LUROT BRAND**

MEWS SPECIALISTS EST. 1971

020 7590 9955

[lettings@lurotbrand.co.uk](mailto:lettings@lurotbrand.co.uk)



Third Floor

Ground Floor



# Redfield Lane, SW5

Unfurnished

£1,000 PW

---

A wonderful two-bedroom house in a quiet street, with a roof terrace.

This fabulously presented townhouse features a modern kitchen/diner, a utility room and a garage on the ground floor. The first floor features two bedrooms, a bathroom, and an ensuite, while the second floor comprises a large L-shaped living room with plenty of natural light, and a third bathroom. The property further benefits from a large south-facing roof terrace.

## LOCATION

Redfield Lane is a pretty street of pastel-coloured houses in the heart of Kenway Village, ideally situated for all the shops, restaurants and transport facilities of Earls Court. Easy access to the M4 and Heathrow too!



Second Floor

First Floor





First Floor

Second Floor



## FEATURES

Two Bedrooms

---

En-suite Bathroom

---

Two Shower Rooms

---

Study or Third Bedroom

---

Available Unfurnished

---

Reception Room

---

Kitchen/Dining Area

---

Roof Terrace

---

Garage

---

## OTHER USEFUL INFORMATION

EPC D

---

Council Tax Band G

---

Deposit Amount £6,000.00

---

## NEAREST TUBE STATIONS

Earl's Court (District & Piccadilly lines)

---

# Redfield Lane

Approx. Gross Internal Area \*

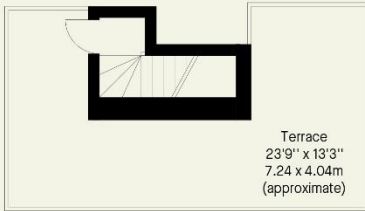
1177 Ft<sup>2</sup> - 109.34 M<sup>2</sup>

(Including Garage)

Approx. Gross Internal Area \*

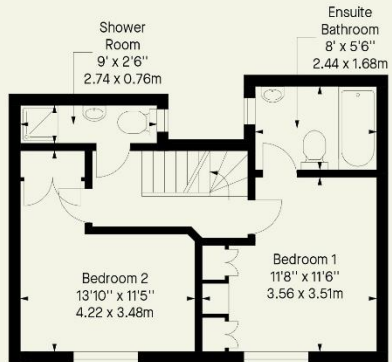
1406 Ft<sup>2</sup> - 130.62 M<sup>2</sup>

(Including Garage & Terrace)



Third Floor

Second Floor



Ground Floor

First Floor

Hyde Park  
37-41 Sussex Place, Hyde Park,  
London W2 2TH

South Kensington  
4-5 Kynance Place, South Kensington,  
London SW7 4QS

[WWW.LUROTBRAND.CO.UK](http://WWW.LUROTBRAND.CO.UK)



Members of NAEA, ARLA, onthemarket.com. Lurot Brand (2) Limited T/A Lurot Brand. Registered in England No. 02035540. Registered Office: 37-41 Sussex Place, London, W2 2TH. VAT No. 629 099 505. [www.lurotbrand.co.uk](http://www.lurotbrand.co.uk)

We have produced these sales particulars as a general guide. We have not carried out a detailed survey of the property and have not tested the services, appliances, or specific fittings. Room sizes are for general guidance purposes and should not be relied upon for fitting carpets or furnishings. Pictures may have been digitally enhanced. Floor plans are not to scale. Fittings shown on floor plans may not match the actual layout or size of fittings at the property. None of the statements as to the property contained in these particulars are to be relied upon as statements or representations of fact. Any reference to alterations to, or use of, any part of the property does not mean that any necessary planning, building regulations or other consent has been obtained. A buyer or lessee must find out by inspection or in other ways that these matters have been properly dealt with and that all information is correct.

All statements in these particulars as to this property are made without responsibility on the part of Lurot Brand. The Seller does not make or give and neither Lurot Brand or any person in their employment has any authority to make or give any representation or warranty whatever in relation to this property.