



# Redcliffe Gardens, SW10

**LUROT BRAND**

MEWS SPECIALISTS EST. 1971

020 7590 9955  
[lettings@lurotbrand.co.uk](mailto:lettings@lurotbrand.co.uk)



Ground Floor

Ground Floor



# Redcliffe Gardens, SW10

Unfurnished

£925 PW

---

A charming and beautifully presented two storey mews house (“The Studio”) tucked away between The Boltons and Redcliffe Square.

The property is set back off the road, located on the ground floor. There are two bedrooms and a office, two bathrooms and a patio garden. Pretty, quirky and surprisingly quiet, this is truly a hidden gem!

## LOCATION

Redcliffe Gardens runs southwards between Old Brompton Road and Fulham Road and is ideally situated for all the shops, restaurants and transport facilities of Chelsea, Fulham and Earl’s Court.



External

First Floor







First Floor

Ground Floor



## FEATURES

Large reception with open-plan kitchen

Master bedroom with en-suite bathroom

1,160 sq ft.

2nd double bedroom

Single bedroom/study

2nd bathroom

Patio terrace

Pet friendly

## OTHER USEFUL INFORMATION

EPC

D

Council Tax Band

H

Deposit Amount

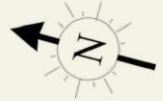
£5,550.00

## NEAREST TUBE STATIONS

Earls Court (London Underground District and Piccadilly line)

# Redcliffe Gardens, SW10

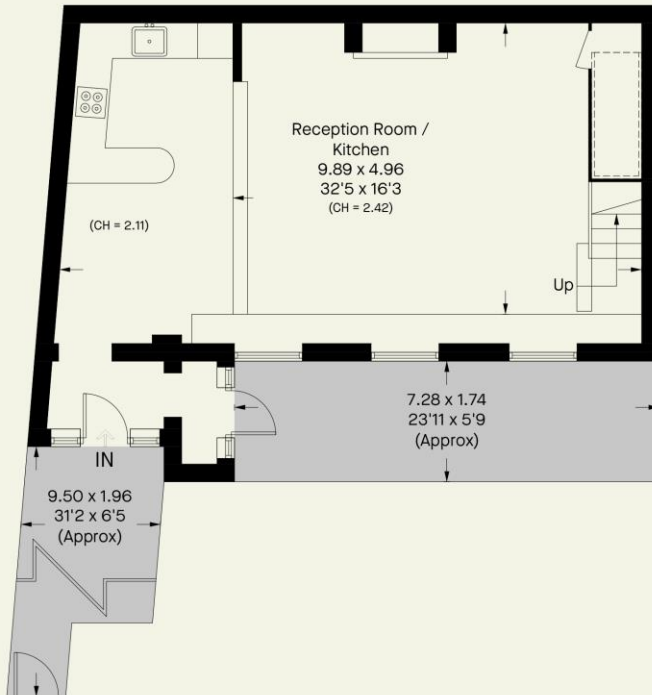
Approximate Area = 111.8 sq m / 1203 sq ft  
Including Limited Use Area (1.8 sq m / 19 sq ft)



 = Reduce head height below 1.5m



First Floor



Ground Floor

Whilst every attempt has been made to ensure the accuracy of the floor plan contained here, measurements of doors, windows, rooms and any other item are approximate and no responsibility is taken for any error, omission, or misstatement. Please check all dimensions before making a decision reliant upon them.

Notting Hill  
8 Ladbroke Grove, Notting Hill,  
London W11 3BG

Hyde Park  
37-41 Sussex Place, Hyde Park,  
London W2 2TH

South Kensington  
4-5 Kynance Place, South Kensington,  
London SW7 4QS

**WWW.LUROTBRAND.CO.UK**



Members of NAEA, ARLA, onthemarket.com. Lurot Brand (2) Limited T/A Lurot Brand. Registered in England No. 02035540. Registered Office: 37-41 Sussex Place, London, W2 2TH. VAT No. 629 099 505. [www.lurotbrand.co.uk](http://www.lurotbrand.co.uk)

---

We have produced these sales particulars as a general guide. We have not carried out a detailed survey of the property and have not tested the services, appliances, or specific fittings. Room sizes are for general guidance purposes and should not be relied upon for fitting carpets or furnishings. Pictures may have been digitally enhanced. Floor plans are not to scale. Fittings shown on floor plans may not match the actual layout or size of fittings at the property. None of the statements as to the property contained in these particulars are to be relied upon as statements or representations of fact. All statements in these particulars as to this property are made without responsibility on the part of Lurot Brand. The Seller does not make or give and neither Lurot Brand or any person in their employment has any authority to make or give any representation or warranty whatever in relation to this property.