



Pembridge Mews, W11

LUROT BRAND

MEWS SPECIALISTS EST. 1971

020 7590 9955
lettings@lurotbrand.co.uk



Picture No. 32

Picture No. 34



Pembridge Mews, W11

Unfurnished

£1,400 PW

A beautifully presented, three-bedroom mews house in the heart of Notting Hill.

This desirable house is situated on one of Notting Hill's most sought after Mews Streets. The large open plan living space opens on to a decked garden, the ground floor has direct access to the garage – providing great storage space and laundry area. The first floor offers a bright master bedroom with built in storage, en suite and Juliette balcony. Two further bedrooms, and family bathroom are on the same floor. There is a very large loft storage space. This house would suit a young family or professional couple looking to enjoy the wonderfully eclectic area and all it has to offer!

LOCATION

Pembridge Mews is ideally situated for all the shops, restaurants and transport facilities of Notting Hill. The world-famous Portobello Road with its eponymous market is a short walk away as are the boutiques and eateries of Westbourne Grove.



Picture No. 20

Picture No. 08





Picture No. 23

Picture No. 19



FEATURES

Reception room, kitchen	Cloakroom
2 double bedrooms	Patio terrace
Large single bedroom	Garage
2 bathrooms (1 en-suite)	

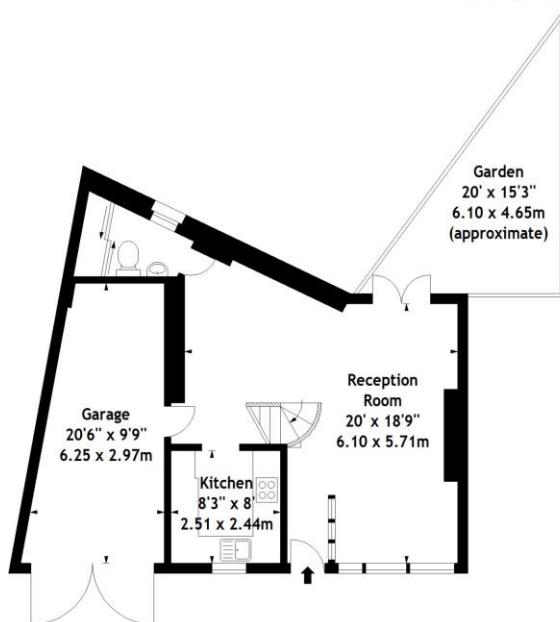
OTHER USEFUL INFORMATION

EPC	D
Council Tax Band	G
Deposit Amount	£8,400.00

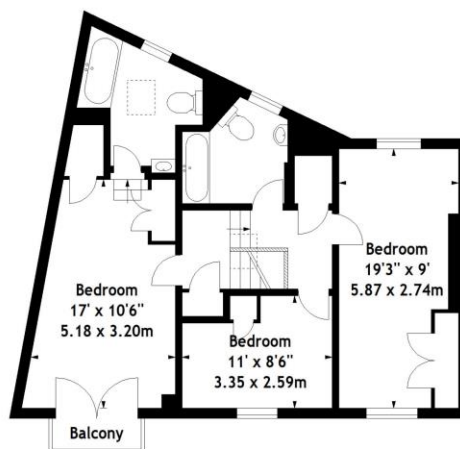
NEAREST TUBE STATIONS

Notting Hill Gate (Central, Circle & District lines)

Pembridge Mews, W11
Approx. Gross Internal Area
1313 Sq Ft - 121.98 Sq M
(Including Garage)



Ground Floor



First Floor

Measured in accordance with RICS guidelines. Every attempt is made to ensure accuracy, however all measurements are approximate. This floor plan is for illustrative purposes only and is not to scale.

© Datagraphy Ltd 2015
Photographs * Floorplans * Virtual Tours
Tel: 0845 643 4401 www.datagraphy.com

Hyde Park
37-41 Sussex Place, Hyde Park,
London W2 2TH

South Kensington
4-5 Kynance Place, South Kensington,
London SW7 4QS

WWW.LUROTBRAND.CO.UK



Members of NAEA, ARLA, onthemarket.com. Lurot Brand (2) Limited T/A Lurot Brand. Registered in England No. 02035540. Registered Office: 37-41 Sussex Place, London, W2 2TH. VAT No. 629 099 505. www.lurotbrand.co.uk

We have produced these sales particulars as a general guide. We have not carried out a detailed survey of the property and have not tested the services, appliances, or specific fittings. Room sizes are for general guidance purposes and should not be relied upon for fitting carpets or furnishings. Pictures may have been digitally enhanced. Floor plans are not to scale. Fittings shown on floor plans may not match the actual layout or size of fittings at the property. None of the statements as to the property contained in these particulars are to be relied upon as statements or representations of fact. All statements in these particulars as to this property are made without responsibility on the part of Lurot Brand. The Seller does not make or give and neither Lurot Brand or any person in their employment has any authority to make or give any representation or warranty whatever in relation to this property.